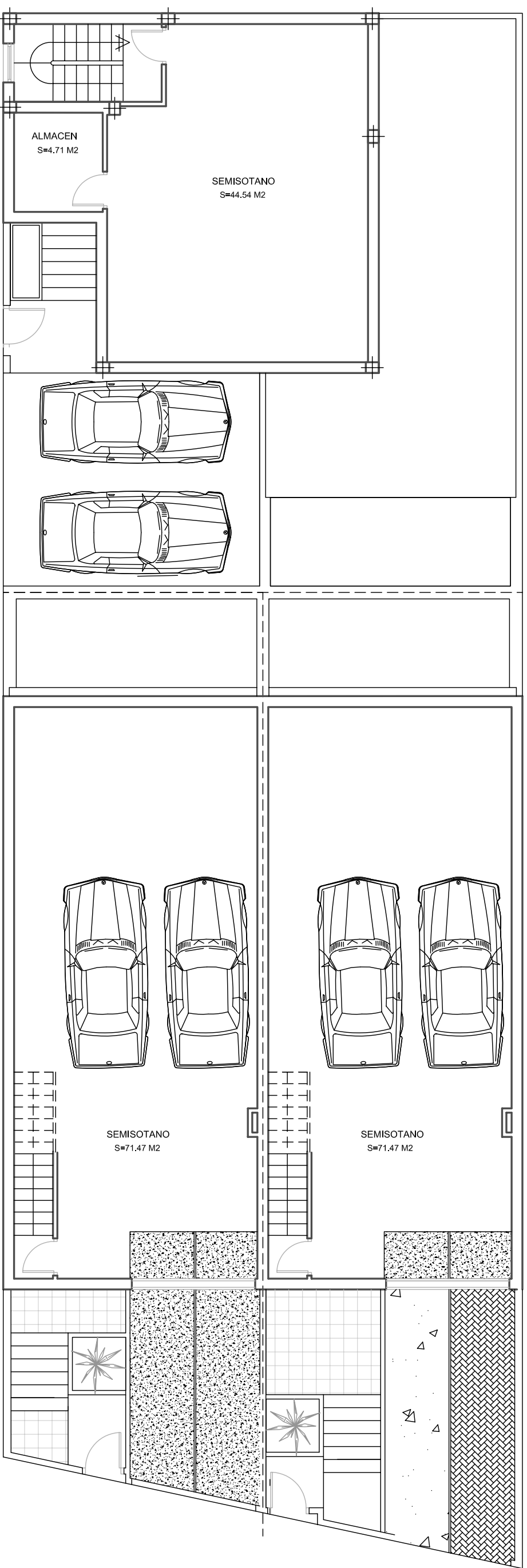


3 PLANTA BAJA  
S=60.10 M<sup>2</sup>  
TOTAL S=128.64 M<sup>2</sup>

1 PLANTA BAJA  
S=59.30 M<sup>2</sup>  
TOTAL S=128.13 M<sup>2</sup>

3 PLANTA SEMISOTANO  
S=82.34 M<sup>2</sup>  
TOTAL S=210.98 M<sup>2</sup>

2 PLANTA BAJA  
S=60.10 M<sup>2</sup>  
TOTAL S=128.64 M<sup>2</sup>



1 PLANTA SEMISOTANO  
S=64.77 M<sup>2</sup>  
TOTAL S=195.90 M<sup>2</sup>

2 PLANTA SEMISOTANO  
S=82.34 M<sup>2</sup>  
TOTAL S=210.98 M<sup>2</sup>